

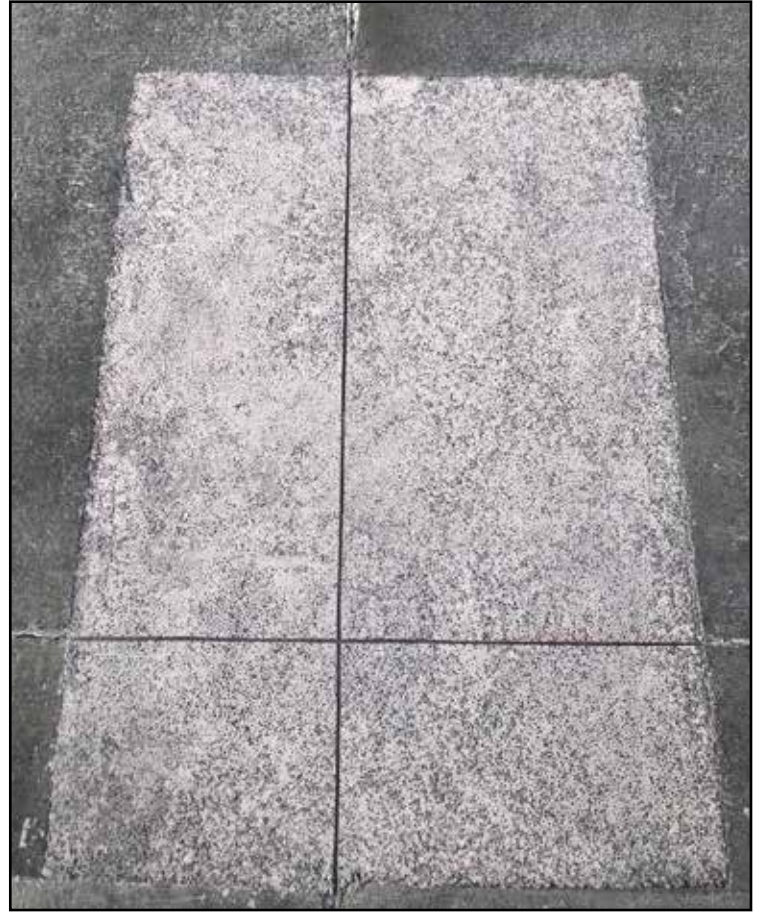


CENOPLASTIC AT WORK

CONCRETE SURFACE REPAIR OF UNDISCLOSED MAJOR AIRPORT

REPAIRING THE DAMAGED JOINTS OF LARGE CONCRETE
PADS SUBJECT TO HEAVY TRAFFIC AT A MAJOR AIRPORT.

AIRPORT CONCRETE REPAIR



REPAIRING THE DAMAGE

Project Description:

Cenoplastic was selected to repair portions of a damaged Airport in the United States. The various damaged areas are subject to heavy traffic from large vehicles and aircrafts. The Ceno-amalgamation was used for the difficult to repair joints of large concrete pads which would otherwise necessitate a remove and replace process.

Once the Ceno-amalgamation specification was approved we went to work to repair the damage with as little interruption to traffic as possible. The rapid curing and installation of the Ceno-amalgamation allowed us to exceed expectations and restore all traffic to the repaired locations in less than 2 hours.

Project Requirements:

- Quick turnaround was a huge part of the consideration for this project.
- The ability to repair existing infrastructure rapidly, rather than remove and replace was also a crucial need.

- Repair locations were spread out over a large Airport. The ability to repair existing concrete was crucial in reducing the overall cost of the repair.

Cenoplastic Products Used:

- Ceno-amalgamation

Project Participants:

- Undisclosed Major Airport
- Cenoplastic, Inc.

Cenoplastic, Inc.

1221 West Coast Hwy
Newport Beach, CA 92663

Contact Information:

Cenoplastic.eco
info@cenoplastic.eco
435.729.9220