

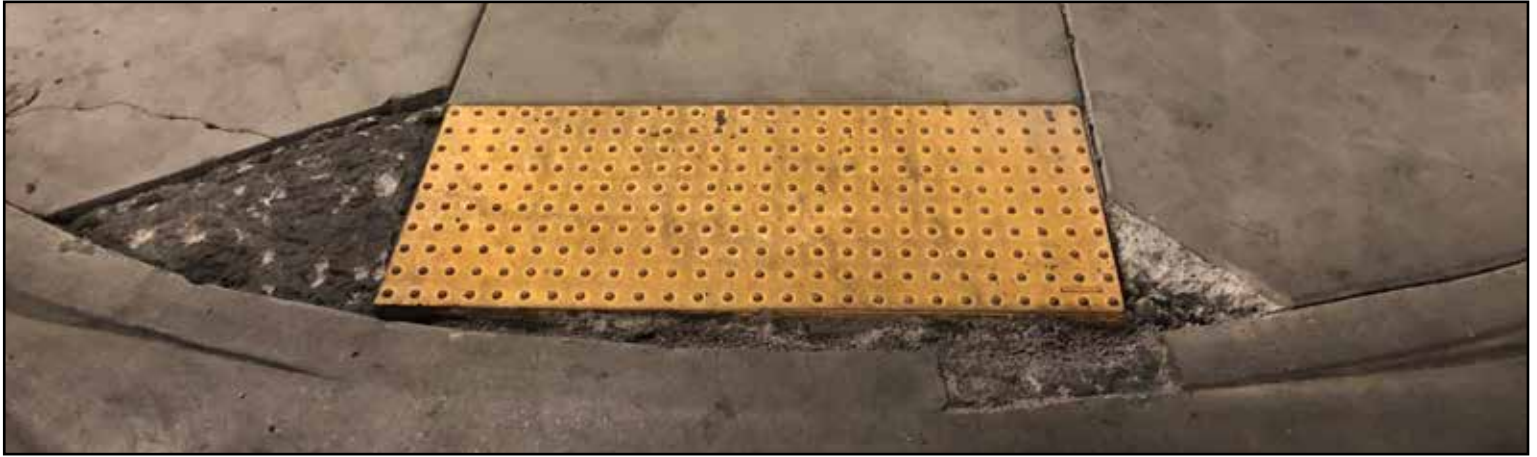


CENOPLASTIC AT WORK

SIDEWALK/ADA REPAIR FOR UNDISCLOSED MAJOR METRO CITY

REPAIRING THE DAMAGED SIDEWALK AND ADA WHICH
PRESENT SIGNIFICANT TRIP AND FALL LIABILITY.

SIDEWALK ADA CONCRETE REPAIR



REPAIRING THE DAMAGE

Project Description:

Cenoplastic was awarded a contract by the municipality to repair portions of their damaged sidewalks. The various damaged areas present significant trip and fall liability to the city and adjacent property owners. The

Once the Ceno-amalgamation specification was approved it was every a available man to repair the damage with as little interruption to pedestrian and vehicular traffic as possible. The rapid curing and installation of the Ceno-amalgamation allowed us to exceed expectations and restore all traffic to the repaired locations in less than 2 hours.

Project Requirements:

- Quick turnaround was a huge part of the consideration for this project.
- The ability to repair existing infrastructure rather than remove and replace was also a crucial need.

- Repair locations were primarily focused in a concentrated location.

Cenoplastic Products Used:

- Ceno-amalgamation

Project Participants:

- Undisclosed Major Metro Municipality
- Cenoplastic, Inc.

Cenoplastic, Inc.

1221 West Coast Hwy
Newport Beach, CA 92663

Contact Information:

Cenoplastic.eco
info@cenoplastic.eco
435.729.9220

